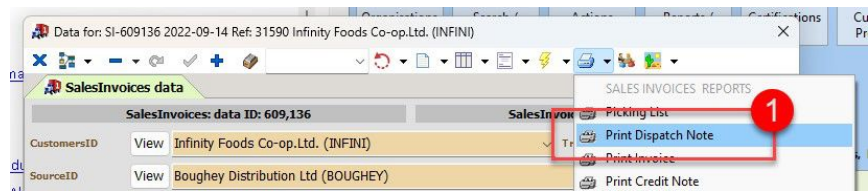


EESys: Use of the Sales Invoices "Dispatched Quantity" Grid

When a SalesInvoice Order is dispatched from the Warehouse, staff must complete details (Quantity Sent and Best Before Date) of the specific stock-items which have been sent, so that product recall can be managed effectively.

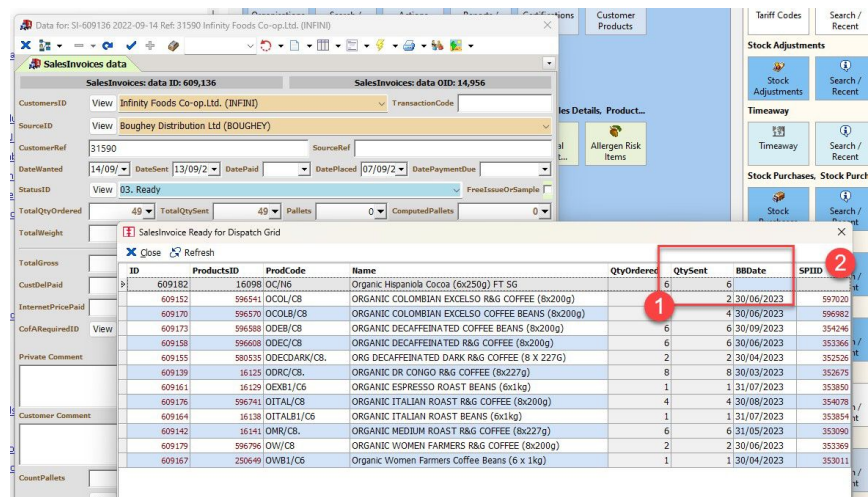
A rapid-entry-grid has been added to the system to speed up this process for staff.

Print Dispatch Note



Print Dispatch Note

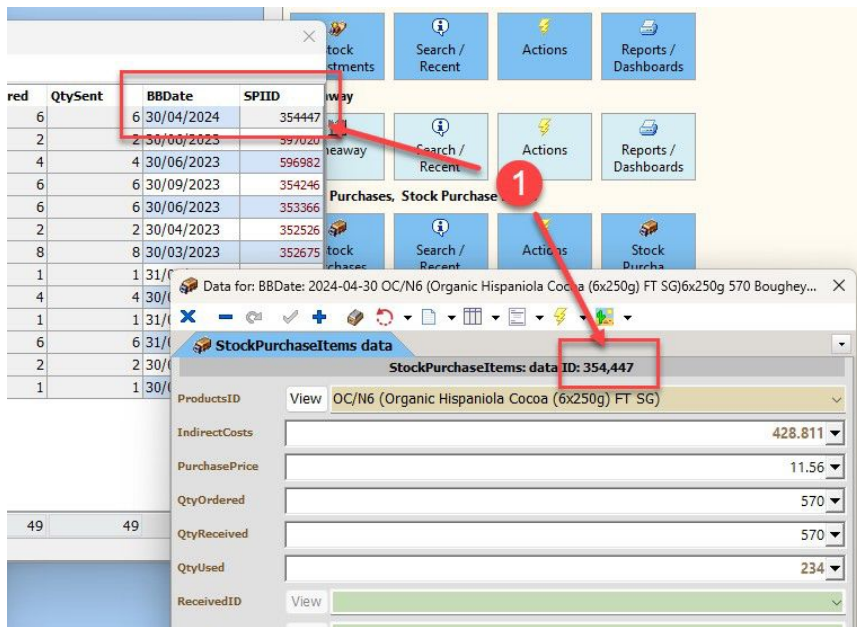
When staff generate the **Dispatch Note**, ("1." in the image above) the system opens a grid (shown below) which details the items being sent.



EESys "Ready for Dispatch" Grid

- Staff should enter "QtySent" and BBDate"
- Note that where no BBDate is entered the "SPI-ID" field will be blank. The "SPI-ID" indicates which **batch** of product has been shipped. If there is no SPI-ID present the system cannot manage tracability and product recall.

Entering the date will "pull through" the SPI-ID

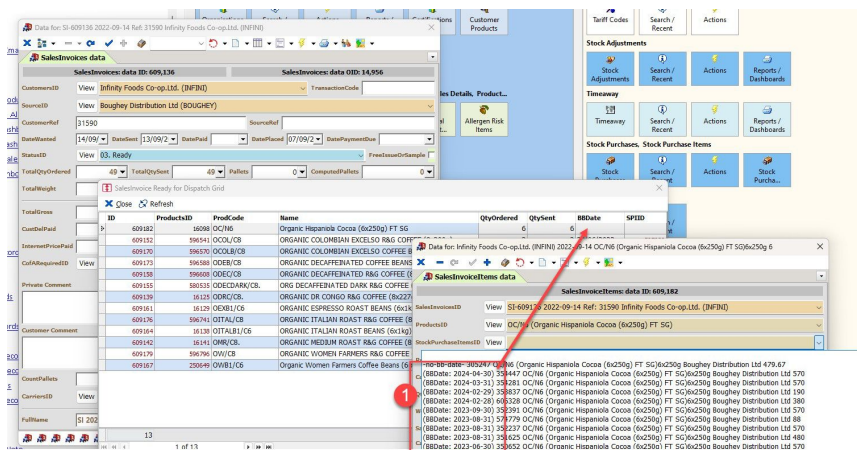


Entering BBDate

As shown in the image above, if the user enters a BBDate, EESys will go and try to fetch an SPI-ID. The SPI-ID indicates the exact batch of product which is being shipped.

If the user inputs a date which does not correspond to a batch of product the SPI-ID will remain blank and the user will be shown a warning. In this case the user should review the value and re-enter a corrected BBDate.

Examples of possible "SPI-ID" values



EESys SalesInvoiceItems Edit Form with SPI-IDs visible

From the Ready for Dispatch Grid the user can **double-click** on any row to open the linked SalesInvoiceItem record for checking, as shown in the image above. Inspecting the List of items in the "StockPurchaseItemsID" field shows the possible BBDates that can be used, as at "1." in the image above.